



---

# POWER8 Processor Single Chip Module

Marking Drawing

FC PLGA

**Advance**

March 26, 2014



© Copyright International Business Machines Corporation 2014

Printed in the United States of America March 2014

IBM, the IBM logo, and [ibm.com](http://ibm.com) are trademarks or registered trademarks of International Business Machines Corp., registered in many jurisdictions worldwide. Other product and service names might be trademarks of IBM or other companies. A current list of IBM trademarks is available on the Web at “Copyright and trademark information” at [www.ibm.com/legal/copytrade.shtml](http://www.ibm.com/legal/copytrade.shtml).

Other company, product, and service names may be trademarks or service marks of others.

All information contained in this document is subject to change without notice. The products described in this document are NOT intended for use in applications such as implantation, life support, or other hazardous uses where malfunction could result in death, bodily injury, or catastrophic property damage. The information contained in this document does not affect or change IBM product specifications or warranties. Nothing in this document shall operate as an express or implied license or indemnity under the intellectual property rights of IBM or third parties. All information contained in this document was obtained in specific environments, and is presented as an illustration. The results obtained in other operating environments may vary.

While the information contained herein is believed to be accurate, such information is preliminary, and should not be relied upon for accuracy or completeness, and no representations or warranties of accuracy or completeness are made.

**Note:** This document contains information on products in the design, sampling and/or initial production phases of development. This information is subject to change without notice. Verify with your IBM field applications engineer that you have the latest version of this document before finalizing a design.

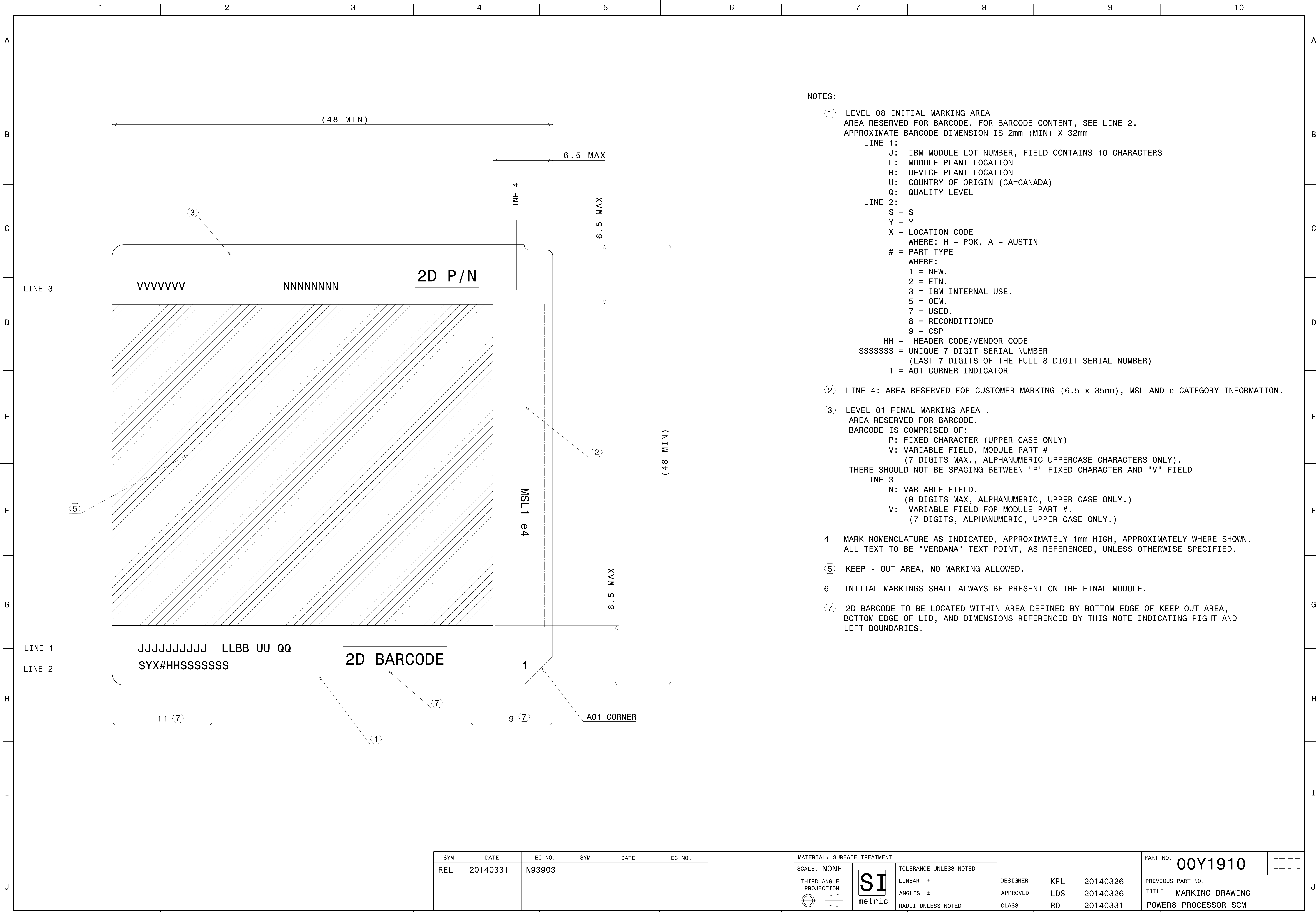
You may use this documentation solely for developing technology products compatible with Power Architecture®. You may not modify this documentation. You may distribute the documentation to suppliers and other contractors hired by you to solely produce your technology products compatible with Power Architecture technology and to your customers (either directly or indirectly through your resellers) in conjunction with their use and instruction of your technology products compatible with Power Architecture technology. No other license, express or implied, by estoppel or otherwise to any intellectual property rights is granted by this document.

THE INFORMATION CONTAINED IN THIS DOCUMENT IS PROVIDED ON AN “AS IS” BASIS. IBM makes no representations or warranties, either express or implied, including but not limited to, warranties of merchantability, fitness for a particular purpose, or non-infringement, or that any practice or implementation of the IBM documentation will not infringe any third party patents, copyrights, trade secrets, or other rights. In no event will IBM be liable for damages arising directly or indirectly from any use of the information contained in this document.

IBM Systems and Technology Group  
2070 Route 52, Bldg. 330  
Hopewell Junction, NY 12533-6351

The IBM home page can be found at [ibm.com](http://ibm.com)®.

Version 1.0  
March 26, 2014



- NOTES:
- ① LEVEL 08 INITIAL MARKING AREA  
AREA RESERVED FOR BARCODE. FOR BARCODE CONTENT, SEE LINE 2.  
APPROXIMATE BARCODE DIMENSION IS 2mm (MIN) X 32mm
  - LINE 1:  
J: IBM MODULE LOT NUMBER, FIELD CONTAINS 10 CHARACTERS  
L: MODULE PLANT LOCATION  
B: DEVICE PLANT LOCATION  
U: COUNTRY OF ORIGIN (CA=CANADA)  
Q: QUALITY LEVEL
  - LINE 2:  
S = S  
Y = Y  
X = LOCATION CODE  
WHERE: H = POK, A = AUSTIN  
# = PART TYPE  
WHERE:  
1 = NEW.  
2 = ETN.  
3 = IBM INTERNAL USE.  
5 = OEM.  
7 = USED.  
8 = RECONDITIONED  
9 = CSP  
HH = HEADER CODE/VENDOR CODE  
SSSSSS = UNIQUE 7 DIGIT SERIAL NUMBER  
(LAST 7 DIGITS OF THE FULL 8 DIGIT SERIAL NUMBER)  
1 = A01 CORNER INDICATOR
  - ② LINE 4: AREA RESERVED FOR CUSTOMER MARKING (6.5 x 35mm), MSL AND e-CATEGORY INFORMATION.
  - ③ LEVEL 01 FINAL MARKING AREA .  
AREA RESERVED FOR BARCODE.  
BARCODE IS COMPRISED OF:  
P: FIXED CHARACTER (UPPER CASE ONLY)  
V: VARIABLE FIELD, MODULE PART #  
(7 DIGITS MAX., ALPHANUMERIC UPPERCASE CHARACTERS ONLY).  
THERE SHOULD NOT BE SPACING BETWEEN "P" FIXED CHARACTER AND "V" FIELD
  - LINE 3  
N: VARIABLE FIELD.  
(8 DIGITS MAX, ALPHANUMERIC, UPPER CASE ONLY.)  
V: VARIABLE FIELD FOR MODULE PART #.  
(7 DIGITS, ALPHANUMERIC, UPPER CASE ONLY.)
  - 4 MARK NOMENCLATURE AS INDICATED, APPROXIMATELY 1mm HIGH, APPROXIMATELY WHERE SHOWN.  
ALL TEXT TO BE "VERDANA" TEXT POINT, AS REFERENCED, UNLESS OTHERWISE SPECIFIED.
  - ⑤ KEEP - OUT AREA, NO MARKING ALLOWED.
  - 6 INITIAL MARKINGS SHALL ALWAYS BE PRESENT ON THE FINAL MODULE.
  - ⑦ 2D BARCODE TO BE LOCATED WITHIN AREA DEFINED BY BOTTOM EDGE OF KEEP OUT AREA, BOTTOM EDGE OF LID, AND DIMENSIONS REFERENCED BY THIS NOTE INDICATING RIGHT AND LEFT BOUNDARIES.

SYM	DATE	EC NO.	SYM	DATE	EC NO.	MATERIAL/ SURFACE TREATMENT	PART NO. <b>00Y1910</b>		
REL	20140331	N93903				SCALE: NONE	DESIGNER	KRL	20140326
						THIRD ANGLE PROJECTION	APPROVED	LDS	20140326
							CLASS	RO	20140331
									PREVIOUS PART NO.
									TITLE MARKING DRAWING
									POWER8 PROCESSOR SCM